

Stud type track rollers (cam follower)

Index

Stud type track rollers – Standard MCF MCFR (KR KRV)

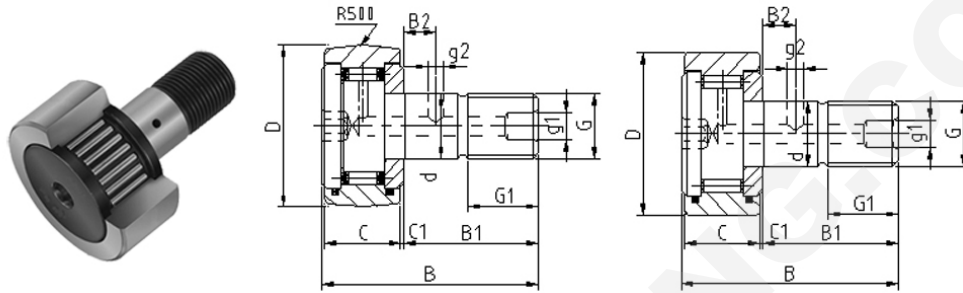
Stud type track rollers-inch size CF CCF

Stud type track rollers-Eccentric type MCFE MCFRE (KRE KRVE)

Stud type track rollers-double row heavy duty type MCFD (NUKR)

Interchange table

Stud type track rollers – Standard MCF MCFR (KR KRV)



Part No. Interchange				Mass (g)	Dimension (mm)					Torque nm	Load rating(N)		
No.		INA	D		d	C	B	B1	G		Cr	Cor	
MCF-13	MCF-13-S	KRV13	KRV13 PP	9.8	13	5	9	23	13	M5 X0.8	2.5	260	280
MCFR-16	MCFR-16-S	KR16	KR16 PP	18	16	6	11	28	16	M6 X1	2.5	370	400
MCF-16	MCF-16-S	KRV16	KRV16 PP	20	16	6	11	28	16	M6 X1	2.5	370	400
MCFR-19	MCFR-19-S	KR19	KR19 PP	28	19	8	11	32	20	M8 X1.25	6.8	430	630
MCF-19	MCF-19-S	KRV19	KRV19 PP	32	19	8	11	32	20	M8 X1.25	6.8	430	630
MCFR-22	MCFR-22-S	KR22	KR22 PP	42	22	10	12	36	23	M10X1.25/M10 X1	12.5	550	670
MCF-22	MCF-22-S	KRV22	KRV22 PP	46	22	10	12	36	23	M10X1.25/M10 X1	12.5	550	670
MCFR-26	MCFR-26-S	KR26	KR26 PP	58	26	10	12	36	23	M10X1.25/M10 X1	12.5	550	670
MCF-26	MCF-26-S	KRV26	KRV26 PP	61	26	10	12	36	23	M10X1.25/M10 X1	12.5	550	670
MCFR-30	MCFR-30-S	KR30	KR30 PP	87	30	12	14	40	25	M12 X1.5	18.2	810	900
MCF-30	MCF-30-S	KRV30	KRV30 PP	99	30	12	14	40	25	M12 X1.5	18.2	810	900
MCFR-32	MCFR-32-S	KR32	KR32 PP	105	32	12	14	40	25	M12 X1.5	18.2	810	900
MCF-32	MCF-32-S	KRV32	KRV32 PP	107	32	12	14	40	25	M12 X1.5	18.2	810	900
MCFR-35	MCFR-35-S	KR35	KR35 PP	169	35	16	18	52	32.5	M16 X1.5	45.8	1230	1560
MCF-35	MCF-35-S	KRV35	KRV35 PP	173	35	16	18	52	32.5	M16 X1.5	45.8	1230	1560
MCFR-40	MCFR-40-S	KR40	KR40 PP	250	40	18	20	58	36.5	M18 X1.5	68.7	1500	2500
MCF-40	MCF-40-S	KRV40	KRV40 PP	255	40	18	20	58	36.5	M18 X1.5	68.7	1500	2500
MCFR-47	MCFR-47-S	KR47	KR47 PP	386	47	20	24	66	40.5	M20 X1.5	101	2110	3140
MCF-47	MCF-47-S	KRV47	KRV47 PP	390	47	20	24	66	40.5	M20 X1.5	101	2110	3140
MCFR-52	MCFR-52-S	KR52	KR52 PP	461	52	20	29	66	40.5	M20 X1.5	101	2110	3140
MCF-52	MCF-52-S	KRV52	KRV52 PP	465	52	20	29	66	40.5	M20 X1.5	101	2110	3140
MCFR-62	MCFR-62-S	KR62	KR62 PP	815	62	24	29	80	49.5	M24 X1.5	205	3110	3840
MCF-62	MCF-62-S	KRV62	KRV62 PP	820	62	24	29	80	49.5	M24 X1.5	205	3110	3840
MCFR-72	MCFR-72-S	KR72	KR72 PP	1140	72	24	29	80	49.5	M24 X1.5	205	3110	3840
MCF-72	MCF-72-S	KRV72	KRV72 PP	1140	72	24	29	80	49.5	M24 X1.5	205	3110	3840

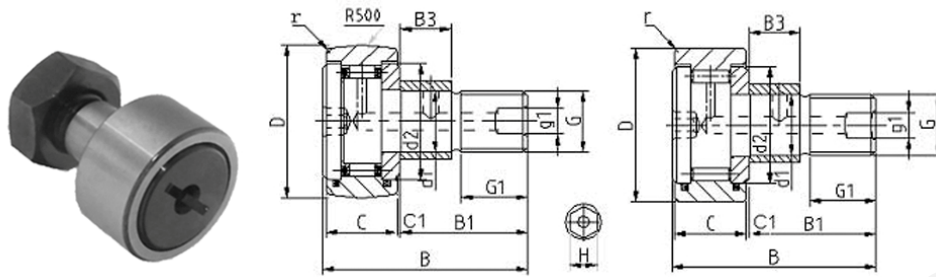
Stud type track rollers (cam follower)

MCFR-80	MCFR-80-S	KR80	KR80 PP	1870	80	30	35	100	63	M30 X1.5	351	4630	6300
MCF-80	MCF-80-S	KRV80	KRV80 PP	1870	80	30	35	100	63	M30 X1.5	351	4630	6300
MCFR-85	MCFR-85-S	KR85	KR85 PP	2030	85	30	35	100	63	M30 X1.5	351	4630	6300
MCF-85	MCF-85-S	KRV85	KRV85 PP	2030	85	30	35	100	63	M30 X1.5	351	4630	6300
MCFR-90	MCFR-90-S	KR90	KR90 PP	2220	90	30	35	100	63	M30 X1.5	351	4630	6300
MCF-90	MCF-90-S	KRV90	KRV90 PP	2220	90	30	35	100	63	M30 X1.5	351	4630	6300

Stud type track rollers-inch size CF CCF

Part No. Interchange			Dimension										Mass	
Cylindrical	RBC	Crowned	G		D		Thread	C		B1		B		(g)
O.D		O.D	in	mm	in	mm		in	mm	in	mm	in	mm	
CF-1/2-N		CCF-1/2-N-SB	0.19	4.826	0.5	12.7	10-32	0.344	8.731	0.5	12.7	0.875	22.225	10
CF-1/2	S 16	CCF-1/2-SB	0.19	4.826	0.5	12.7	10-32	0.375	9.525	0.625	15.875	1.031	26.194	10
CF-9/16	S 18	CCF-9/16-SB	0.19	4.826	0.5625	14.288	10-32	0.375	9.525	0.625	15.875	1.031	26.194	14
CF-5/8-N		CCF-5/8-N-SB	0.25	6.35	0.625	15.875	0.25"-28	0.406	10.319	0.625	15.875	1.063	26.988	22
CF-5/8	S 20	CCF-5/8-SB	0.25	6.35	0.625	15.875	0.25"-28	0.438	11.112	0.75	19.05	1.219	30.956	22
CF-11/16	S 22	CCF-11/16-SB	0.25	6.35	0.6875	17.463	0.25"-28	0.438	11.112	0.75	19.05	1.219	30.956	23
CF-3/4	S 24	CCF-3/4-SB	0.375	9.525	0.75	19.05	0.375"-24	0.5	12.7	0.875	22.225	1.406	35.719	35
CF-7/8	S 28	CCF-7/8-SB	0.375	9.525	0.875	22.225	0.375"-24	0.5	12.7	0.875	22.225	1.406	35.719	45
CF-1	S 32	CCF-1-SB	0.438	11.112	1	25.4	0.438"-20	0.625	15.875	1	25.4	1.656	42.069	73
CF-1 1/8	S 36	CCF-1 1/8-SB	0.438	11.112	1.125	28.575	0.438"-20	0.625	15.875	1	25.4	1.656	42.069	86
CF-1 1/4	S 40	CCF-1 1/4-SB	0.5	12.7	1.25	31.75	0.5"-20	0.75	19.05	1.25	31.75	2.031	51.594	132
CF-1 3/8	S 44	CCF-1 3/8-SB	0.5	12.7	1.375	34.925	0.5"-20	0.75	19.05	1.25	31.75	2.031	51.594	154
CF-1 1/2	S 48	CCF-1 1/2-SB	0.625	15.875	1.5	38.1	0.625"-18	0.875	22.225	1.5	38.1	2.406	61.119	232
CF-1 5/8	S 52	CCF-1 5/8-SB	0.625	15.875	1.625	41.275	0.625"-18	0.875	22.225	1.5	38.1	2.406	61.119	277
CF-1 3/4	S 56	CCF-1 3/4-SB	0.75	19.05	1.75	44.45	0.75"-16	1	25.4	1.75	44.45	2.781	70.644	377
CF-1 7/8	S 60	CCF-1 7/8-SB	0.75	19.05	1.875	47.625	0.75"-16	1	25.4	1.75	44.45	2.781	70.644	418
CF-2	S 64	CCF-2-SB	0.875	22.225	2	50.8	0.875"-14	1.25	31.75	2	50.8	3.281	83.344	599
CF-2 1/4	S 72	CCF-2 1/4-SB	0.874	22.225	2.25	57.15	0.875"-14	1.25	31.75	2	50.8	3.281	83.344	731
CF-2 1/2	S 80	CCF-2 1/2-SB	1	25.4	2.5	63.5	1"-14	1.5	38.1	2.25	57.15	3.781	96.043	1126
CF-2 3/4	S 88	CCF-2 3/4-SB	1	25.4	2.75	69.85	1"-14	1.5	38.1	2.25	57.15	3.781	96.043	1285
CF-3	S 96	CCF-3-SB	1.25	31.75	3	76.2	1.25"-12	1.75	44.45	2.5	63.5	4.281	108.743	1834
CF-3 1/4	S 104	CCF-3 1/4-SB	1.25	31.75	3.25	82.55	1.25"-12	1.75	44.45	2.5	63.5	4.281	108.743	2157
CF-3 1/2	S 112	CCF-3 1/2-SB	1.375	34.925	3.5	88.9	1.375"-12	2	50.8	2.75	69.85	4.781	121.443	2824
CF-4	S 128	CCF-4-SB	1.5	38.1	4	101.6	1.5"-12	2.25	57.15	3.5	88.9	4.781	121.443	3378

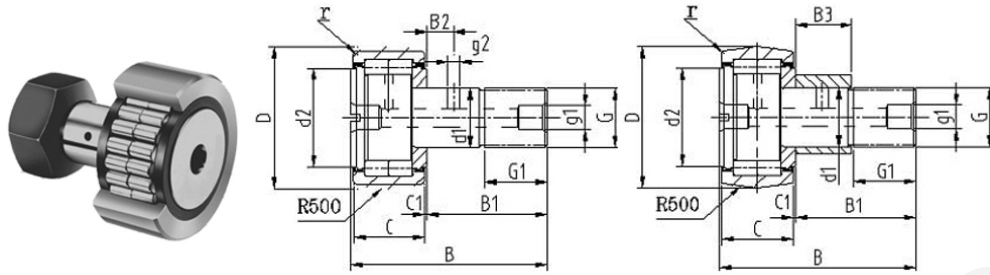
Stud type track rollers-Eccentric type MCFE MCFRE (KRE KRVE)



Part No. Interchange				Mass	Dimension (mm)						Load rating (N)			
No.			INA	(g)	D	d	C	B	B1	G	Cr	Cor	Cw	Cow
MCFRE-16	MCFRE-16-S	KRE16 X	KRE16 PP X	20	16	6	11	28	16	M6 X1	3650	3540	3020	3100
MCFE-16	MCFE-16-S	KRVE16 X	KRVE16 PP X	22	16	6	11	28	16	M6 X1	6000	8000	4610	6000
MCFRE-19	MCFRE-19-S	KRE19 X	KRE19 PP X	31	19	8	11	32	20	M8 X1.25	3820	4160	3220	3100
MCFE-19	MCFE-19-S	KRVE19	KRVE19 PP X	35	19	8	11	32	20	M8 X1.25	6300	9800	5000	6900
MCFRE-22	MCFRE-22-S	KRE22 X	KRE22 PP X	48	22	10	12	36	23	M10 X1 (1.25)	4770	5010	3450	4020
MCFE-22	MCFE-22-S	KRVE22 X	KRVE22 PP X	50	22	10	12	36	23	M10 X1 (1.25)	6200	9900	5300	7100
MCFRE-26	MCFRE-26-S	KRE26 X	KRE26 PP X	62	26	10	12	36	23	M10 X1 (1.25)	4100	5500	4100	5200
MCFE-26	MCFE-26-S	KRVE26 X	KRVE26 PP X	65	26	10	12	36	23	M10 X1 (1.25)	6600	9900	5320	8900
MCFRE-30	MCFRE-30-S	KRE30 X	KRE30 PP X	93	30	12	14	40	25	M12 X1.5	6140	7700	5820	6400
MCFE-30	MCFE-30-S	KRVE30 X	KRVE30 PP X	95	30	12	14	40	25	M12 X1.5	9200	10100	7500	10600
MCFRE-32	MCFRE-32-S	KRE32 X	KRE32 PP X	103	32	12	14	40	25	M12 X1.5	6100	8700	5100	7001
MCFE-32	MCFE-32-S	KRVE32 X	KRVE32 PP X	105	32	12	14	40	25	M12 X1.5	8220	12600	8000	11800
MCFRE-35	MCFRE-35-S	KRE35 X	KRE35 PP X	182	35	16	18	52	32.5	M16 X1.5	9900	15000	7900	10100
MCFE-35	MCFE-35-S	KRVE35 X	KRVE35 PP X	184	35	16	18	52	32.5	M16 X1.5	10300	24000	9800	16000
MCFRE-40	MCFRE-40-S	KRE40 X	KRE40 PP X	263	40	18	20	58	36.5	M18 X1.5	9290	11400	8100	11500
MCFE-40	MCFE-40-S	KRVE40 X	KRVE40 PP X	265	40	18	20	58	36.5	M18 X1.5	11200	23500	10800	18500
MCFRE-47	MCFRE-47-S	KRE47 X	KRE47 PP X	406	47	20	24	66	40.5	M20 X1.5	12500	22000	10500	20500
MCFE-47	MCFE-47-S	KRVE47 X	KRVE47 PP X	410	47	20	24	66	40.5	M20 X1.5	16000	41000	16600	32000
MCFRE-52	MCFRE-52-S	KRE52 X	KRE52 PP X	481	52	20	29	66	40.5	M20 X1.5	10500	21000	10800	22500
MCFE-52	MCFE-52-S	KRVE52 X	KRVE52 PP X	485	52	20	29	66	40.5	M20 X1.5	22000	39000	10800	38100
MCFRE-62	MCFRE-62-S	KRE62 X	KRE62 PP X	818	62	24	29	80	49.5	M24 X1.5	20500	33000	16500	31500
MCFE-62	MCFE-62-S	KRVE62 X	KRVE62 PP X	830	62	24	29	80	49.5	M24 X1.5	31700	61000	29600	56000
MCFRE-72	MCFRE-72-S	KRE72 X	KRE72 PP X	1068	72	24	29	80	49.5	M24 X1.5	41500	50300	25000	50890
MCFE-72	MCFE-72-S	KRVE72 X	KRVE72 PP X	1073	72	24	29	80	49.5	M24 X1.5	31500	71000	27000	75000
MCFRE-80	MCFRE-80-S	KRE80 X	KRE80 PP X	1610	80	30	35	100	63	M30 X1.5	40800	75300	24500	57000
MCFE-80	MCFE-80-S	KRVE80 X	KRVE80 PP X	1621	80	30	35	100	63	M30 X1.5	46000	102000	39900	100600
MCFRE-85	MCFRE-85-S	KRE85 X	KRE85 PP X	1800	85	30	35	100	63	M30 X1.5	38700	64300	29900	69000
MCFE-85	MCFE-85-S	KRVE85 X	KRVE85 PP X	2010	85	30	35	100	63	M30 X1.5	38700	64300	29900	69000
MCFRE-90	MCFRE-90-S	KRE90 X	KRE90 PP X	2010	90	30	35	100	63	M30 X1.5	38700	64300	29900	69000
MCFE-90	MCFE-90-S	KRVE90 X	KRVE90 PP X	2030	90	30	35	100	63	M30 X1.5	48970	102300	38800	100000

Stud type track rollers (cam follower)

Stud type track rollers-double row heavy duty type MCFD (NUKR)



Part No.	Interchange	Mass	Part No.	Mass	Dimension (mm)						Thread	Load rating(N)		Limiting Speed
No.	INA	(g)	Eccentric	(g)	D	d	C	B	B1	B2	G	Cr	Cor	Rpm
MCFD-35	NUKR35	164	NUKRE35	176.5	35	16	18	52	32.5	8	M16X1.5	15100	19980	4230
MCFD-40	NUKR40	242	NUKRE40	257.8	40	18	20	58	36.5	8	M18X1.5	13800	18000	4210
MCFD-47	NUKR47	380	NUKRE47	399.5	47	20	24	66	40.5	9	M20X1.5	30200	40000	3200
MCFD-52	NUKR52	450	NUKRE52	469.5	52	20	29	66	40.5	9	M20X1.5	37500	49300	1990
MCFD-62	NUKR62	795	NUKRE62	823.5	62	24	29	80	49.5	11	M24X1.5	41000	59300	1300
MCFD-72	NUKR72	1200	NUKRE72	1073	72	24	29	80	49.5	11	M24X1.5	45000	63000	1020
MCFD-80	NUKR80	1800	NUKRE80	1600	80	30	35	100	63	15	M30X1.5	75000	103000	1200
MCFD-90	NUKR90	1960	NUKRE90	2030	90	30	35	100	63	15	M30X1.5	75000	102300	1500

Stud type track rollers (cam follower)

Metric size cam follower interchange table

McGill		INA SKF NTN		IKO THK	
Cage	Full Complement	Cage	Full Complement	Cage	Full Complement
MCFR-13	MCF-13	--	--	CF5	--
MCFR-16	MCF-16	KR-16	KRV-16	CF6R	--
MCFR-19	MCF-19	KR-19	KRV-19	CF8R	--
MCFR-22	MCF-22	KR-22	KRV-22	--	--
MCFR-22A	MCF-22A	--	--	CF10R	--
MCFR-26	MCF-26	KR-26	KRV-26	--	--
MCFR-26A	MCF-26A	--	--	CF10-1R	--
MCFR-30	MCF-30	KR-30	KRV-30	CF12R	--
MCFR-32	MCF-32	KR-32	KRV-32	CF12-1R	--
MCFR-35	MCF-35	KR-35	KRV-35	CF16R	--
MCFR-40	MCF-40	KR-40	KRV-40	--	--
MCFR-40A	MCF-40A	--	--	CF18R	--
MCFR-47	MCF-47	KR-47	KRV-47	--	--
MCFR-47A	MCF-47A	--	--	CF20-1R	--
MCFR-52	MCF-52	KR-52	KRV-52	--	--
MCFR-52A	MCF-52A	--	--	CF20R	--
MCFR-62	MCF-62	KR-62	KRV-62	--	--
MCFR-62A	MCF-62A	--	--	CF24R	--
MCFR-72	MCF-72	KR-72	KRV-72	--	--
MCFR-72A	MCF-72A	--	--	CF24-1R	--
MCFR-80	MCF-80	KR-80	KRV-80	CF30R	--
MCFR-85	MCF-85	KR-85	--	CF30-1R	--
MCFR-90	MCF-90	KR-90	KRV-90	CF30-2R	--

Optional Features	SMITH	McGill	SKF.INA	IKO	THK	NTN
Sealed	add suffix "S"	add suffix "S"	add suffix "PP"	add suffix "UU"	add suffix "UU"	add suffix "LL"
Cylindrical O.D.	add suffix "C"	add suffix "X"	add suffix "X"	remove suffix "R"	remove suffix "R"	add suffix "X"
Hex-Drive	add suffix "B"	add suffix "B"	add suffix "SK"	add suffix "B"	add suffix "A"	add suffix "H"
Eccentric	add suffix "E"	add prefix "E"	add prefix "E"	add prefix "E"		

Inch size cam follower interchange table

McGill		Torrington		RBC		SMITH		INA
unsealed	Heavy duty	unsealed	Heavy duty	unsealed	Heavy duty	unsealed	Heavy duty	unsealed
CF-1/2-N		CR-8				CR-1/2-A		
CF-1/2	CFH-1/2	CR-8-1	CRH-8-1	S-16	H-16	CR-1/2	HR-1/2	CF-8-1
CF-9/16	CFH-9/16			S-18	H-18	CR-9/16		
CF-5/8-N		CR-10				CR-5/8-A		

Stud type track rollers (cam follower)

CF-5/8	CFH5/8	CR-10-1	CRH-10-1	S-20	H-20	CR-5/8	HR-5/8	CF-10-1
CF-11/16	CFH-11/16			S-22	H-22	CR-11/16		
CF-3/4	CFH-3/4	CR-12	CRH-12	S-24	H-24	CR-3/4	HR-3/4	CF-12
CF-7/8	CFH7/8	CR-14	CRH-14	S-28	H-28	CR-7/8	HR-7/8	CF-14
CF-1	CFH-1	CR-16	CRH-16	S-32	H-32	CR-1	HR-1	CF-1
CF-1 1/8	CFH-1 1/8	CR-18	CRH-18	S-36	H-36	CR-1 1/8	HR-1 1/8	CF-1 1/8
CF-1 1/3	CFH-1 1/4	CR-20	CRH-20	S-40	H-40	CR-1 1/3	HR-1 1/4	CF-20
CF-1 3/8	CFH-1 3/8	CR-22	CRH-22	S-44	H-44	CR-1 3/8	HR-1 3/8	CF-22
CF-1 1/2	CFH-1 1/2	CR-24	CRH-24	S-48	H-48	CR-1 1/2	HR-1 1/2	CF-24
CF-1 5/8	CFH-1 5/8	CR-26	CRH-26	S-52	H-52	CR-1 5/8	HR-1 5/8	CF-26
CF-1 3/4	CFH-1 3/4	CR-28	CRH-28	S-56	H-56	CR-1 3/4	HR-1 3/4	CF-28
CF-1 7/8	CFH-1 7/8	CR-30	CRH-30	S-60	H-60	CR-1 7/8	HR-1 7/8	CF-30
CF-2	CFH-2	CR-32	CRH-32	S-64	H-64	CR-2	HR-2	CF-32
CF-2 1/4	CFH-2 1/4	CR-36	CRH-36	S-72	H-72	CR-2 1/4	HR-2 1/4	CF-36
CF-2 1/2	CFH-2 1/2	CR-40	CRH-40	S-80	H-80	CR-2 1/2	HR-2 1/2	CF-40
CF-2 3/4	CFH-2 3/4	CR-44	CRH-44	S-88	H-88	CR-2 3/4	HR-2 3/4	CF-44
CF-3	CFH-3	CR-48	CRH-48	S-96	H-96	CR-3	HR-3	CF-48
CF-3 1/4	CFH-3 1/4	CR-52	CRH-52	S-104	H-104	CR-3 1/4	HR-3 1/4	CF-52
CF-3 1/2	CFH-3 1/2	CR-56	CRH-56	S-112	H-112	CR-3 1/2	HR-3 1/2	CF-56
CF-4	CFH-4	CR-64	CRH-64	S-128	H-128	CR-4	HR-4	CF-64

Optional feature	McGill	Torrington	RBC	Smith	INA
Hex hole	Add Suffix "B"	Add Prefix "B"	Add Suffix "W"	Add Suffix "B"	Add Suffix "SK"
Eccentric Stud	Add Suffix "E"	Add Prefix "E"	Add Suffix "X"	Add Suffix "E"	Add Suffix "E"
Crowned OD	Add Suffix "C"	Add Prefix "C"	Add Suffix "C"	Add Suffix "C"	Add Suffix "Y"
LUBRI-DISC® Seal	Add Suffix "S"	Add Prefix "S"	Add Suffix "L"	-	-